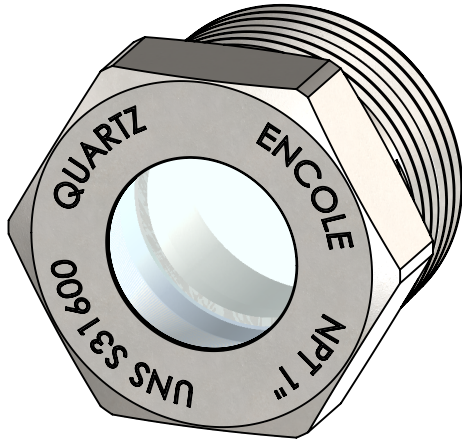


## Encole Manufacturer's Part Number: 324A1003

### High Pressure Sight Glass, 316L, Quartz, NPT 1"



Sight window with NPT threads conforming to ASME B1.20.1. For visual inspection, machine vision, laser sensors, in use with all common hydraulic oils, refrigerants, paper & pulp plants, marine exterior, oil wells, feedwater heaters. An ideal choice for oil & gas exploration and production wells assisted with hydraulic pressure.

316L Stainless Steel housing has a finish of 32 RMS providing smooth surfaces reducing residues or particle contaminants. Quartz window is sealed into the housing with non-outgassing quartz-filled bond forming a single-piece part. This sight glass has a long working life under severe temperature swings and prolonged exposures to UV light.

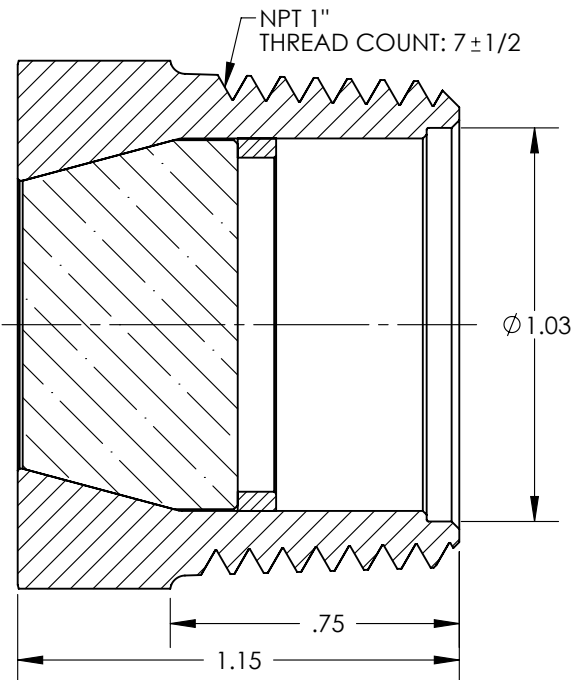
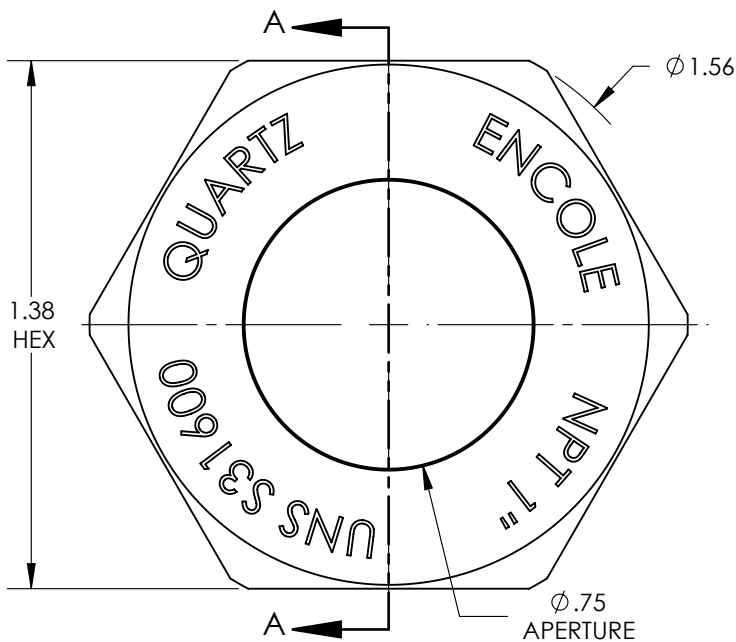
Use traditional installation methods with Teflon® tape or NPT thread sealant. Do not exceed 115 ft/lb of torque during installation.

#### Technical Data:

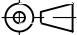
- Operating Temperature: -40° to +48° C
- Pressure: 235 bar internal, 10 bar external
- Transmitted Wavelength: 217-3600nm; >50%
- Index of Refraction  $n_d$  @ 587nm: 1.4585

#### Material and Testing Compliance:

- Chemical Resistance: per NACE MR0175.
- Ring material: Stainless Steel UNS S31600.
- Glass: Fused Quartz, GE-124. Sides are flat to 0.0003", 40-20 S-D.
- Internal Seal: Silica CAS 14808-60-7, Base CAS 25068-38-6, Flexibilizer CAS 68610-41-3, Amine Blend CAS 101-77-9.
- Pressure tested per Pressure Equipment Directive 97/23/EG 02/98, Module H. Factor of Safety, FOS = 1.9



SECTION A-A

<p><b>MANUFACTURER:</b></p> <p>Encole LLC 373 River Oaks Cr. San Jose, CA 95134 USA <a href="http://www.encole.com">www.encole.com</a></p>	<p>UNLESS OTHERWISE SPECIFIED:</p> <ul style="list-style-type: none"> <li>• GD&amp;T PER: ASME Y14.5M-1994</li> <li>• ALL DIMENSIONS ARE IN <b>INCHES</b></li> <li>• TOLERANCES: <ul style="list-style-type: none"> <li>.X ± .03</li> <li>.XX ± .01</li> <li>.XXX ± .005</li> </ul> </li> <li>• FILLETS &amp; EDGES: .005-.02</li> <li>• ANGLES: ± 1/2°</li> </ul> <p> THIRD ANGLE PROJECTION</p>	<p>PART NUMBER: <b>324A1003</b></p> <p>DESCRIPTION:</p> <p>High Pressure Sight Glass, 316L, Quartz, NPT 1"</p> <p>WEIGHT: 0.25 lb</p> <p>Information in this Data Sheet complies with Encole Certificate of Conformance No. CC-324A1003.</p>
--	--	--